

U **BALTIC**
OPEN
BOHEMIA
2017
EVENT HANDBOOK

GO CART ARENA PISEK HRADISTE
CZECH REPUBLIC
LOC: 49.3030981N, 14.1150336E
DATE 8. 8. - 11. 8. 2017

EMERGENCY INFORMATION

MINOR INJURIES

Please accompany the injured person to the event control. Emergency aid is provided there. A medical attendant will be present every day, who can treat minor injuries such as cuts, scratches, sunburns, insect bites, etc.

SEVERE INJURIES

Call an ambulance yourself if someone is severely injured and requires urgent help. The emergency number for every landline and mobile phone is **112**.

Direct call for Ambulance 155

Direct call for Fire Brigade 150

Direct call for Police 158

**THE EVENT AREA IS DANGER
PLACE. I TAKE PART ON THE EVENT
FULLY AWARE OF THIS, ON MY
OWN RISK. I ACCEPT THE EVENT
SAFETY RULES.**

ABOUT THE TRACK

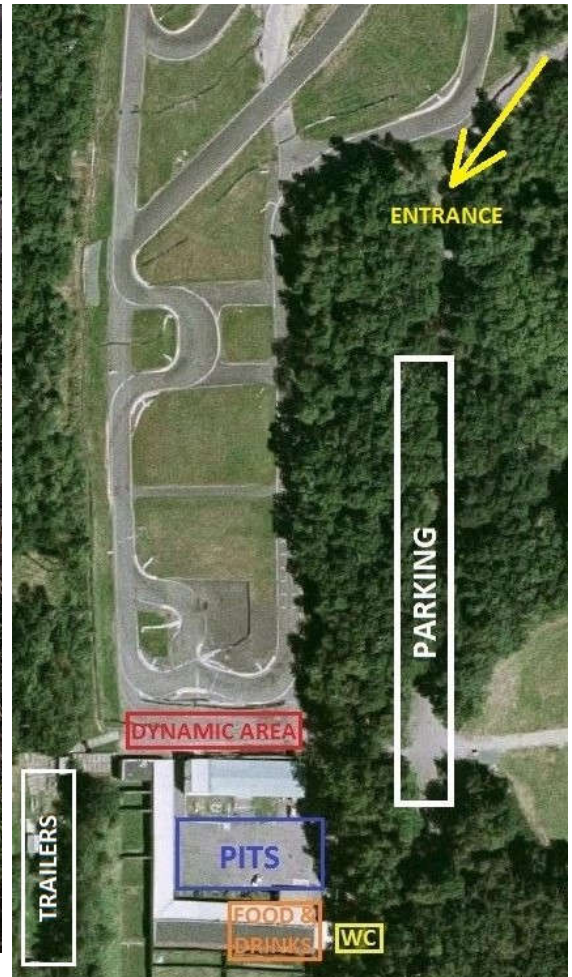
Length: 1105 m

Width: 7 - 9 m

Elevation: 4 m

Endurance direction: counterclockwise

19 turns, 7 right, 12 left



GENERAL RULES FOR BALTIC OPEN BOHEMIA 2017

1. Cars taking part in the Baltic Open Bohemia 2017 must comply rules of Formula Student from year of its first competition. e. g. Power limitation, restrictor diameter, etc.
2. Tires will be marked at the scrutineering. officials will perform random tire checks.
3. Drivers are allowed to drive only one certain car (for example: if one team has two cars then one driver is not allowed to drive both cars). During registration or at drivers meeting all drivers will get their car number written on their wristband. One driver is allowed to drive all dynamic events. in acceleration, slalom and sprint every car will have 4 runs (2+2 runs) from the priority queue. After that from common queue until the end of every event. last car on the start line in the last minute before the end of the event will get the last run. **When the driver wants to race with another car, than own decided, the time will not count towards the score. The driver runs just for fun. Please use this option only not in the priority line.**
4. If a car is unable to restart or rejoin the endurance due to maintenance, they will get a 20 second penalty for every 5 minutes run over 30 minutes. Every car has 30 minutes for driver change. You have the chance to rejoin the endurance until the officially scheduled time for endurance is over but only when you have the permission from the officials at the pits. All maintenance will be allowed if you ask for permission. Time penalty will not be counted if you are ready but the officials haven't given the green flag (depending on the number of cars on the track).
5. In total 4 persons (3 mechanics + 1 driver) are allowed to enter the dynamic area at once. they will be marked with a wristband which can be exchanged among teammates. appropriate equipment and basic safety must be complied!
6. Scrutineering will be available on request when necessary.
7. Drivers and mechanics must be sober at all times in the pits, dynamic area and charging area. Officials are allowed to perform tests of sobriety at all times during the dynamic events.
8. I ensure there is always at least one valid fire extinguisher (>5 kg) accompanying the race car.
9. Smoking (including e-cigarettes) is only and only allowed at the smoking area. Smoking on dormitory is allowed only in dedicated places.
10. Electrical safety – HV battery pack , Motor Controller, Inverters, Battery Chargers are sealed during scrutineering and could be repaired in the charging area only. Electrical officials must be notified before repair work. No more than 3 people are allowed to work in the charging area at the same time.

11. The officials perform random checks on the power output of the cars. Noncompliance results as 0 points in that event. Play fair or go home.
12. Tractive System Master Switch has to be operated by team appointed Safety Member. Safety Member is registered at scrutineering.

BALTIC OPEN CODE OF CONDUCT

1. I do not leave any valuables unattended at the pit area and in accommodation site at any time.
2. I do not use drugs or drink alcohol in the pits, dynamic area or charging area. If intoxicated I do not wander around mentioned areas but sleep it off somewhere else.
3. During the use of electrical power tools like drills or angle grinders I always use safety goggles and ear protection. I always ensure safety for myself and people around me while working in the pits.
4. I do not perform any operation that produces litter or debris e.g. cutting carbon fibre or metal in the pits. It can only be done in the designated area.
5. I do not make/cause open fires in the event area. This includes bbq grilles, oxy-acetylene torches, heaters, cigarettes etc.
6. I do not smoke (including e-cigarettes) in the pits, charging area, dynamic area, in all buildings (Hostel room).
7. I do not keep any fuel containers open.
8. I always dispose of the in the dedicated place.
9. I am familiar with the way a fire extinguisher works and am always ready to use it when necessary.
10. I do not touch formula student electric vehicles when i am not certain that it is totally safe. Even then it is on my own risk!
11. I only drive formula student race cars on designated areas at designated time.
12. I am always helpful to others, do not whine about the weather or sleepless nights and have a generally positive attitude.
13. I always follow the instructions of the event officials and organizers. Two points to keep in mind:
 1. They are always right
 2. If i don't agree with them then i take a deep breath and look at the first point!
14. **Important! Motorsport can be dangerous! In case there is an accident or any injuries i am responsible for myself and always do my best to help others.**

EVENT SCHEDULE:

Day 1: August 8 2017

12:00 – 20:00 Arrival of the teams to the race track, setting up pits (bring your own tents, stuff, etc.), tech. inspection,

14:00 – 18:00 Accommodation registration at hostel (49.3105528N, 14.1359906E)

18:00 – 18:30 Team Welcome (Pit Square),

20:00 – ??? Chill out, Setting up of Finish Sauna

Day 2: August 9 2017

7:30 – 9:00 Breakfast

8:00 – 20:00 Race track open

9:00 – 10:00 Drivers briefing and Course walk

10:00 – 13:00 Acceleration Event

13:00 – 14:00 Lunch

14:00 – 14:30 Course walk

14:30 – 18:00 Hill Climb Event

18:30 – Group Photo

20:00 – ??? Chill out, Sauna for Beginners

Day 3 August 10 2017

7:30 – 9:00 Breakfast

8:00 – 20:00 Race track open

9:00 – 10:00 Drivers briefing and Course walk

10:00 – 13:00 Autocross Clockwise Event

13:00 – 14:00 Lunch

14:00 – 14:30 Course walk

14:30 – 18:00 Autocross Counter Clockwise Event

20:00 – ??? Chill out, Sauna for Experienced ;)

Day 4 August 11 2017

7:30 – 9:00 Breakfast

8:00 – 18:00 Race track open

9:00 – 10:00 Drivers briefing and Course walk

10:00 – 14:00 Endurance Event

14:00 – 15:00 Lunch

15:00 – 17:00 Free Endurance track

18:30 – 20:00 Award Ceremony

20:00 – ??? Farewell, Goodbye Sauna

Day 5 August 12 2017

?? – 10:00 Accommodation left (no breakfast)

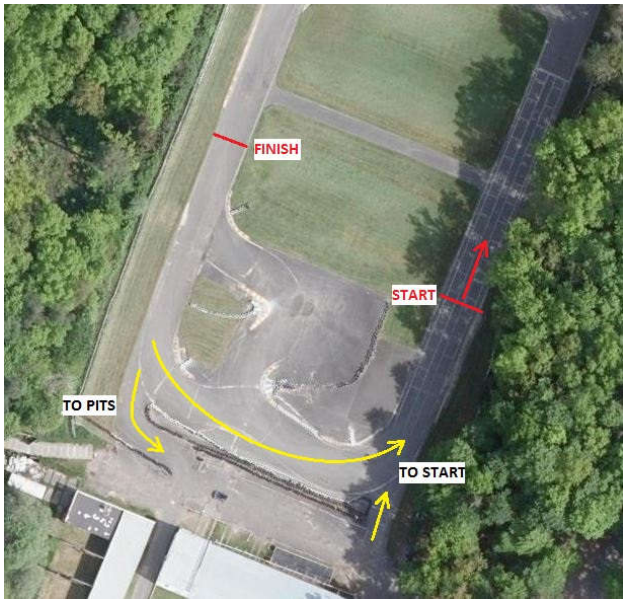
TRACK LAYOUTS



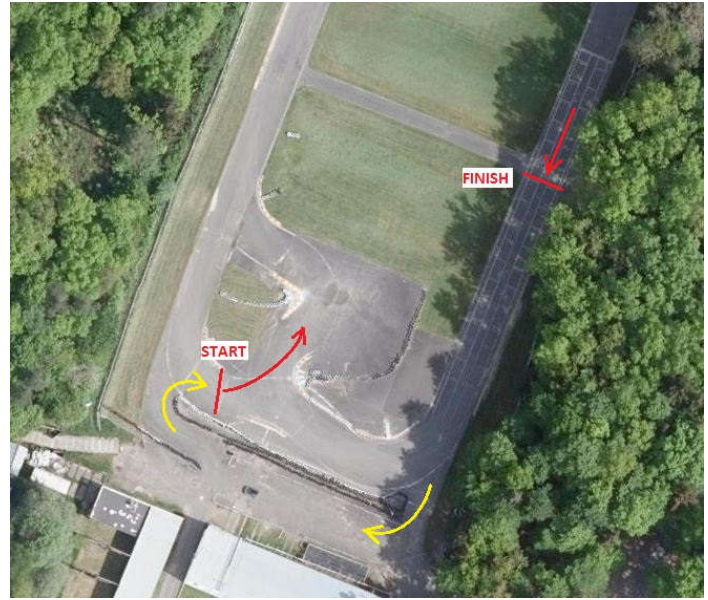
Acceleration Race



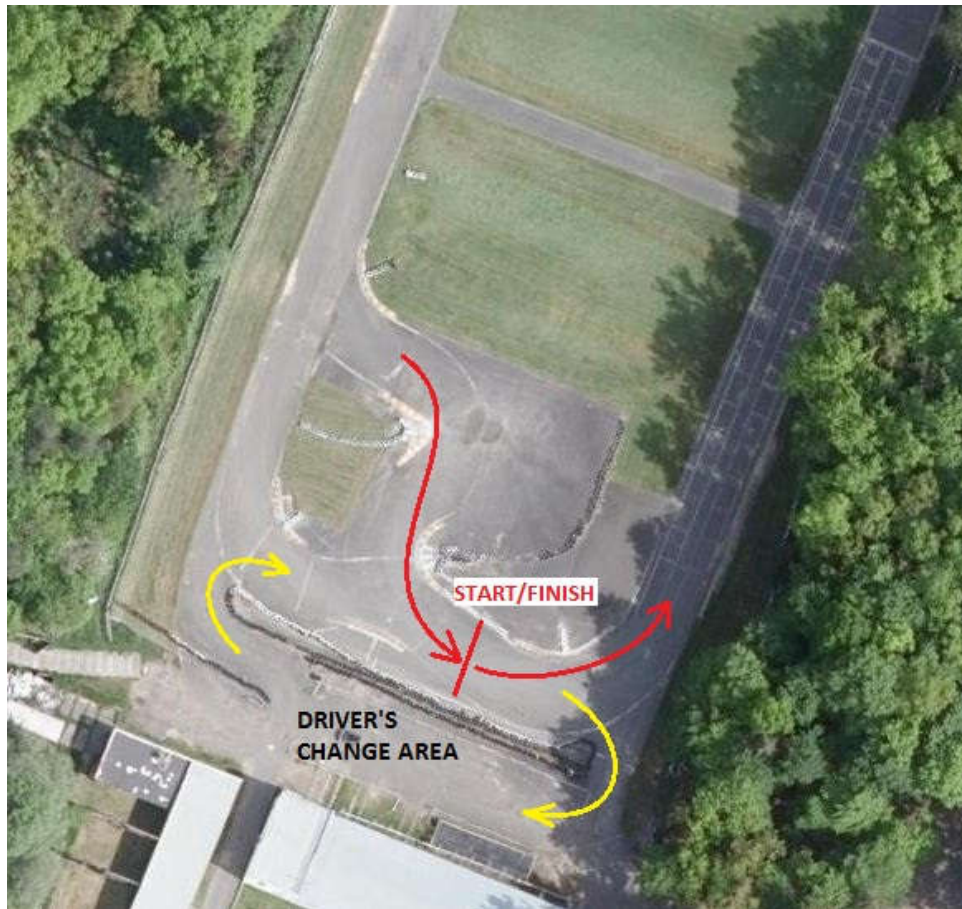
Hill Climb Race



Autocross CCW Race



Autocross CW Race



Endurance Race

DYNAMIC EVENTS & SCORING

THE DEPOSIT FOR THE TRANSPONDER ATTACHMENT IS 10 EUROS. IT WILL BE FULLY REFUNDED IF YOU BRING IT BACK IN ONE PIECE :-)

Acceleration

Traditional acceleration. The format is the same as at every formula student competition. You can accelerate as much as you can. We will have queues for 1st and 2nd run drivers.

Hill Climb

Czech Republic is famous by highlands. We have one on our track, do lets use it instead of skid pad. quickest car through the track on the top of the hill scores the highest points. Also there are queues for 1st and 2nd run drivers also Scoring will accord to FS rules for Autocross.

Sprint

Shows your potential to win Baltic Open Bohemia 2017. Slowest car in sprint goes first on track to tackle endurance. Fastest car in sprint has the chance to start last which means better chance to run quick times because of low traffic on track. There will be two ways to show who is right or left curves lover :) Sum of best time (CW and CCW) will make endurance start order.

Endurance

The ultimate challenge. The winner of endurance has a huge step to win the whole event. both drivers run 11km on track.

Scoring

Acceleration	80
Hill Climb	160
Sprint CW	180
Sptint CCW	180
Endurance	400

ACCOMMODATION & FOOD

Accommodation is provided at the Bedřich Schwarzenberg's Forestry College (Higher Forestry School) and Secondary Forestry School, Lesnická 55, 397 01 Písek Czech Republic 49.3108150N, 14.1348425E

There are triple rooms, two rooms together with a sanitary facility in one apartment. All members will find their beds. Please help us to minimize the costs for accommodation and if necessary share rooms with another team members. i. e. 1 Estonian, 1 Finish, 1 Czech means great opportunity to meet and share good mood. :)

During evening celebrations and fun, please remember to keep clean and try not to leave behind tracks, do not use the grill in the school arboretum.

Breakfast is a tradition on the Baltic Open. It will be a decent beginning of the day. There will be various dishes and it is up to you to mix your breakfast to make your morning better after hard evening ;-)

At the race track we have a restaurant set up for us where you can buy lunch and dinner (they will most likely take cash payments only so be prepared).

There are also cafes, pubs, grocery stores, etc. in the city so you should not starve. Teams who would like to make the event cozy for themselves and want to light up a grill then you are allowed to do that but only at the fireplace area.

BALTIC OPEN BOHEMIA 2017 OFFICIALS:

Zdeněk Houf

Administrative Leader

+420 720 672 328

zdenek.houf@eforce.cvut.cz

Michal Medek

Event Coordinator

+420 604 164 263

michal.medek@eforce.cvut.cz

Adam Podhrázdský

Electrical Officer, Technical Coordinator

+420 605 836 966

adam.podhrazsky@eforce.cvut.cz

Petr Sucháček

Mechanical Officer, Scrutineering

+420 608 751 483

petr.suchacek@eforce.cvut.cz

USEFUL AND INTERESTING PLACES AROUND

ATM machine and shopping park

Galerie Písek, Hradišfská 2690 Písek, 49°18'12.089"N, 14°8'23.123"E 49.3033581N, 14.1397564E

Municipal Power Plant

The oldest public hydroelectric power plant in Bohemia. Originally a watermill, rebuilt by František Křížík in 1887 into a hydroelectric power plant. Thus, Písek became the first town in the Czech lands to have permanent electric street lighting. Powerplant is still on duty. And it is so close to city centre

Opened daily from 9 AM to 6 PM.

Adress: Podskalí 2537/4 Písek 49°18'27.651"N, 14°8'45.696"E 49.3076808N, 14.1460267E

Another interesting places

If at some point you feel that you need to get away from the track for a moment and you would like to go and eat somewhere in Písek or just rest and take some pictures, then <http://www.pisek.eu/> might help you out. really nice places out there – go and check it out! you can always ask for further tips and assistance from the organizers at any time.

We would like to thank the authors of the previous handbook, which we have used as a model for a new one.